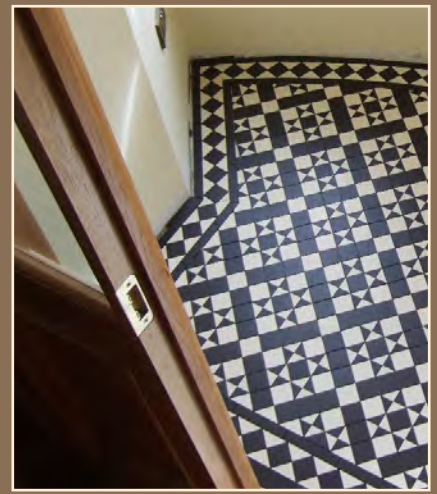


www.oldeenglishtiles.co.uk



Created with versatility in mind

Katrine A with a Classic border

(See page 9 for details)

Our tiles

The Olde English geometric tile collection has been created with versatility in mind. Recreate a period look, modernise an old design, or develop a pattern of your own. Olde English Tiles come in a variety of shapes and sizes and an amazing 25 colours in most of the shapes. The tiles are frost resistant and suitable for both interior and exterior use.

This brochure shows a range of colour combinations in each of the designs. However, these are just suggestions so feel free to experiment and change the colours to suit your taste. Olde English tiles give you the freedom to create a new floor which is totally in tune with your home environment.

Fixing tiles

We recommend that you have your tiles laid by a professional tiler. Tiles should be laid on a sound, flat base, using a cementitious floor tile adhesive and grouted with a fine, cement based, grey floor tile grout. Ask your retailer for advice. For the more intricate designs, aim for grout lines of 1-2mm, adjusting as required to cater for any size differences and for best appearance. Designs with larger tiles (e.g. 100mm and 150mm squares) can use wider grout lines.

Sealing

When laid indoors, we recommend sealing our tiles with HG Protective Coating Satin Finish or an equivalent non-permanent sealer. Be sure that the tiling has dried out completely before sealing and that no moisture is trapped under the seal. If moisture is trapped, it will produce a cloudy finish beneath the seal coat – this can only be rectified by stripping the sealer (with HG Power Cleaner) and re-sealing. Cleaning should be carried out using HG Shine Restoring Tile Cleaner. If a sealer of a different make is used, follow the manufacturer's guidance for cleaning and stripping products. Manufacturers' instructions should always be followed, with special attention paid to health and safety issues.

EXTERIOR TILING SHOULD NOT BE SEALED AS THIS CAN COMPROMISE THE FROST RESISTANCE.

Sizes and colours

Olde English Tiles are natural clay products and there may be small variations in both size and shading. Adjust grout lines to allow for dimensional differences. We strongly advise you to take the usual precaution of mixing tiles of the same colour from different boxes to ensure any colour variations are evenly distributed.

Exterior use

Olde English Tiles are fully vitrified and so frost resistant. Ensure that exterior tiling is laid so that water cannot pool on the tiles and maintain grouting correctly.

Technical data:

Thickness	Max 10mm (except Steptreads)
Water absorption	0.1 to 0.5%
Surface resistance	7 - mohs scale
Crush resistance	Min 3200 kgf/cm ²
Flexural strength	Able to withstand min 380 kgf/cm ²
Frost resistance	No damage after 50 tests +200C to -150C
Heat resistance	No change
Slip resistance	European Standard R10

Tiles should be carefully examined before fixing. Fixing of the tiles constitutes acceptance of their quality. Olde English Tiles accepts no liability for faulty installation work, or the quality or correctness of the tiles once fixed. As far as the law permits, liability is limited to replacement of faulty items or a refund of their cost and excludes any consequential loss, including the cost of removal and refixing.

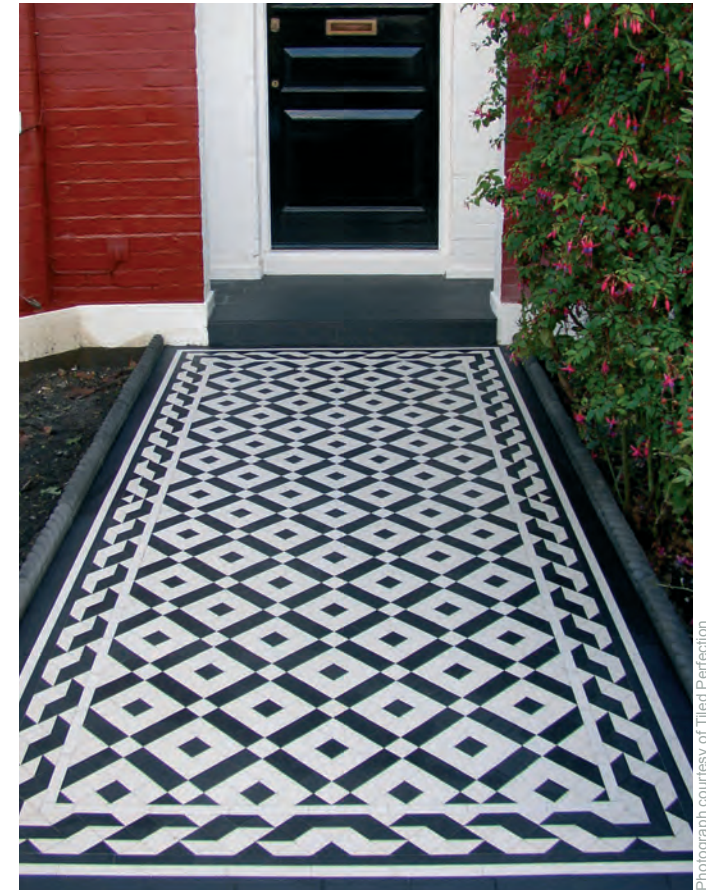

OLDE ENGLISH
GEOMETRIC FLOOR TILES

Colliford

The shapes in this design are available in all 25 colours. Below are just a few examples of the colour combinations you can choose from.



Colliford (D) with a Twist border



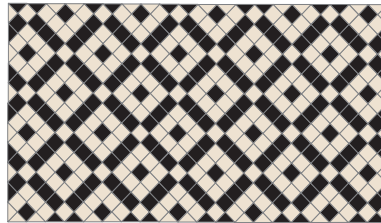
Colliford (A) with a Twist border

Photograph courtesy of Tiled Perfection

Tiles required per square metre

Colliford (A)

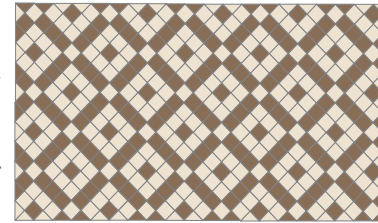
50mm Black Squares = 175



50mm White Squares = 225

Colliford (B)

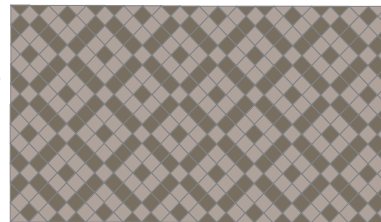
50mm Coffee Squares = 175



50mm White Squares = 225

Colliford (C)

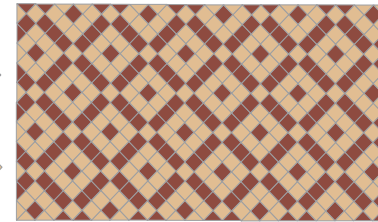
50mm Anthracite Squares = 175



50mm Pale Grey Squares = 225

Colliford (D)

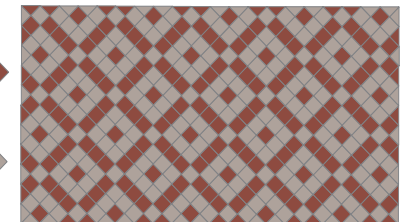
50mm Red Squares = 175



50mm Cognac Squares = 225

Colliford (E)

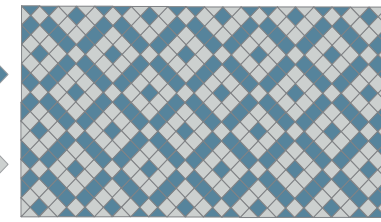
50mm Red Squares = 175



50mm Pale Grey Squares = 225

Colliford (F)

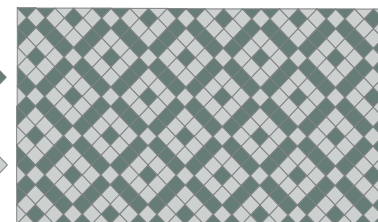
50mm Dark Blue Squares = 175



50mm Pearl Grey Squares = 225

Colliford (G)

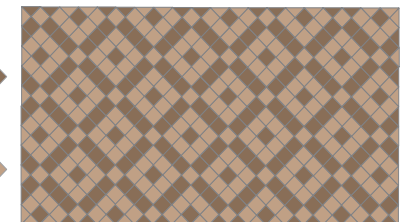
50mm Dark Green Squares = 175



50mm Pearl Grey Squares = 225

Colliford (H)

50mm Coffee Squares = 175



50mm Linen Squares = 225

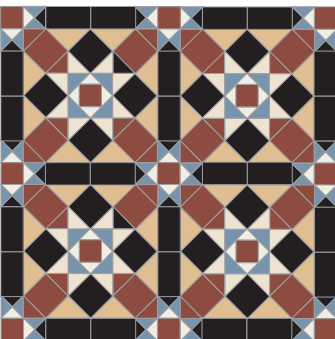
Grasmere

The shapes in this design are available in all 25 colours. Below are just a few examples of the colour combinations you can choose from.

Tiles required per square metre

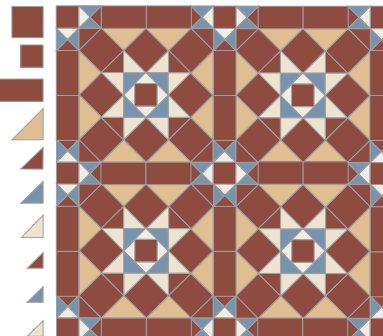
Grasmere (A)

- 70mm Red Squares = 33
- 70mm Black Squares = 33
- 50mm Red Squares = 18
- 100x50mm Black Rectangles = 36
- 70/70/100mm Cognac Triangles = 60
- 50/50/70mm Red Triangles = 61
- 50/50/70mm Blue Triangles = 36
- 50/50/70mm White Triangles = 72
- 35/35/50mm Black Triangles = 30
- 35/35/50mm Blue Triangles = 60
- 35/35/50mm White Triangles = 66



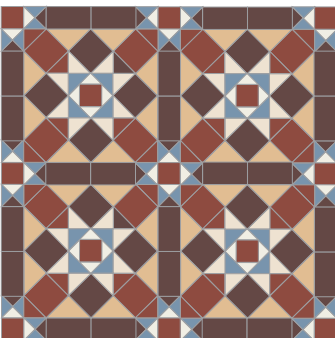
Grasmere (B)

- 70mm Red Squares = 66
- 50mm Red Squares = 18
- 100x50mm Red Rectangles = 36
- 70/70/100mm Cognac Triangles = 60
- 50/50/70mm Red Triangles = 61
- 50/50/70mm Blue Triangles = 36
- 50/50/70mm White Triangles = 72
- 35/35/50mm Red Triangles = 30
- 35/35/50mm Blue Triangles = 60
- 35/35/50mm White Triangles = 66



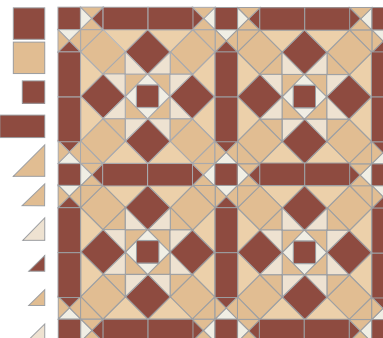
Grasmere (C)

- 70mm Red Squares = 33
- 70mm Brown Squares = 33
- 50mm Red Squares = 18
- 100x50mm Brown Rectangles = 36
- 70/70/100mm Cognac Triangles = 60
- 50/50/70mm Red Triangles = 61
- 50/50/70mm Blue Triangles = 36
- 50/50/70mm White Triangles = 72
- 35/35/50mm Brown Triangles = 30
- 35/35/50mm Blue Triangles = 60
- 35/35/50mm White Triangles = 66



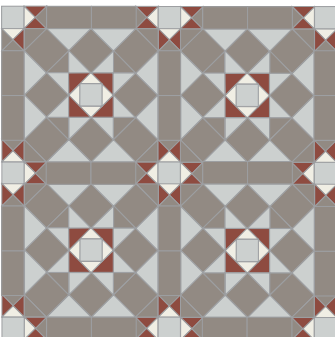
Grasmere (D)

- 70mm Red Squares = 33
- 70mm Cognac Squares = 33
- 50mm Red Squares = 18
- 100x50mm Red Rectangles = 36
- 70/70/100mm Ivory Triangles = 60
- 50/50/70mm Cognac Triangles = 97
- 50/50/70mm White Triangles = 72
- 35/35/50mm Red Triangles = 30
- 35/35/50mm Cognac Triangles = 60
- 35/35/50mm White Triangles = 66



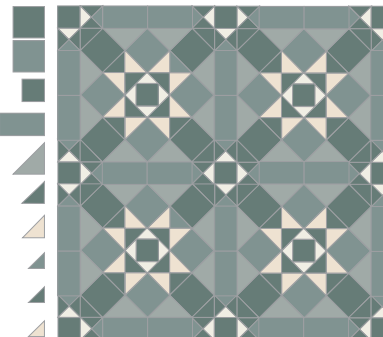
Grasmere (E)

- 70mm Grey Squares = 66
- 50mm Pearl Grey Squares = 18
- 100x50mm Grey Rectangle = 36
- 70/70/100mm Pearl Grey Triangles = 60
- 50/50/70mm Red Triangles = 36
- 50/50/70mm Pearl Grey Triangles = 72
- 50/50/70mm Grey Triangles = 61
- 35/35/50mm Grey Triangles = 30
- 35/35/50mm Red Triangles = 60
- 35/35/50mm White Triangles = 66



Grasmere (F)

- 70mm Dark Green Squares = 33
- 70mm Green Squares = 33
- 50mm Dark Green Squares = 18
- 100x50mm Green Rectangles = 36
- 70/70/100mm Pale Green Triangles = 60
- 50/50/70mm Dark Green Triangles = 97
- 50/50/70mm White Triangles = 72
- 35/35/50mm Green Triangles = 30
- 35/35/50mm Dark Green Triangles = 60
- 35/35/50mm White Triangles = 66



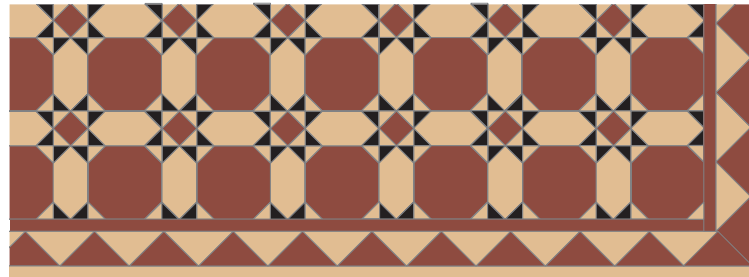

Grasmere (E) with a Paladin border.



Grasmere (C) with a Paladin border.

Torridon

Hexagons and octagons are available in 11 colours, squares in all 25. See back page for details.



Torriron (E) with a Large Dogtooth border.

Tiles required per square metre

Torriron (A)

- 150mm Ivory Octagons = 16
- 150mm Green Hexagons = 40
- 50mm Ivory Squares = 27
- 35/35/50mm Green Triangles = 165
- 35/35/50mm Cognac Triangles = 165

Torriron (B)

- 150mm Blue Octagons = 16
- 150mm White Hexagons = 40
- 50mm Blue Squares = 27
- 35/35/50mm White Triangles = 165
- 35/35/50mm Blue Triangles = 165

Torriron (C)

- 150mm Cognac Octagons = 16
- 150mm Red Hexagons = 40
- 50mm Blue Squares = 27
- 35/35/50mm Black Triangles = 165
- 35/35/50mm White Triangles = 165

Torriron (D)

- 150mm White Octagons = 16
- 150mm Black Hexagons = 40
- 50mm White Squares = 27
- 35/35/50mm White Triangles = 165
- 35/35/50mm Black Triangles = 165



Torriron (C) with a Large Dogtooth border.

Torriron (E)

- 150mm Red Octagons = 16
- 150mm Cognac Hexagons = 40
- 50mm Red Squares = 27
- 35/35/50mm Cognac Triangles = 165
- 35/35/50mm Black Triangles = 165

Torriron (F)

- 150mm Green Octagons = 16
- 150mm White Hexagons = 40
- 50mm Green Squares = 27
- 35/35/50mm White Triangles = 165
- 35/35/50mm Green Triangles = 165

Torriron (G)

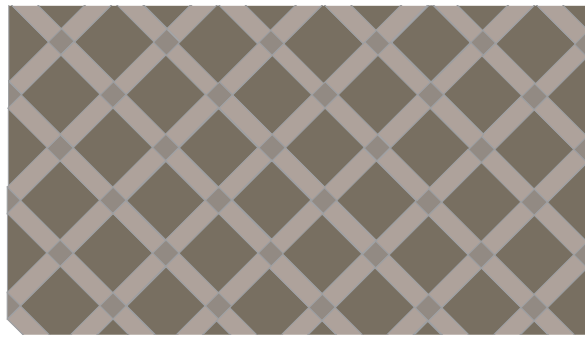
- 150mm Parme Octagons = 16
- 150mm Grey Hexagons = 40
- 50mm Parme Squares = 27
- 35/35/50mm Pearl Grey Triangles = 165
- 35/35/50mm Grey Triangles = 165

Torriron (H)

- 150mm Red Octagons = 16
- 150mm Black Hexagons = 40
- 50mm White Squares = 27
- 35/35/50mm White Triangles = 165
- 35/35/50mm Black Triangles = 165

Fernworthy

The shapes in this design are available in all 25 colours. These are just a few examples of the colour combinations you can choose from.



Fernworthy (A)

- 150mm Red Squares = 25 
- 150x50mm Cognac Strips = 50 
- 50mm Black Squares = 25 



Fernworthy (C)

- 150mm Anthracite Squares = 25 
- 150x50mm Pale Grey Strip = 50 
- 50mm Grey Squares = 25 



Tiles required per square metre

Fernworthy (B)

- 150mm White Squares = 25 
- 150x50mm Black Strips = 50 
- 50mm White Squares = 25 



Fernworthy (D)

- 150mm Old Pink Squares = 25 
- 150x50mm Pearl Grey Strips = 50 
- 50mm Old Pink Squares = 25 



Rutland

The shapes in this design are available in all 25 colours. These are just a few examples of the colour combinations you can choose from.



Rutland (C) with a Classic border

Photograph courtesy of Titled Perfection

Rutland (A)

- 100mm Super White Squares = 50 
- 70mm Super White Squares = 50 
- 50/50/70mm Black Triangles = 200 






Rutland (C)

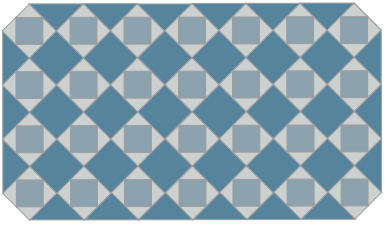
- 100mm Red Squares = 50 
- 70mm Brown Squares = 50 
- 50/50/70mm Cognac Triangles = 200 






Tiles required per square metre

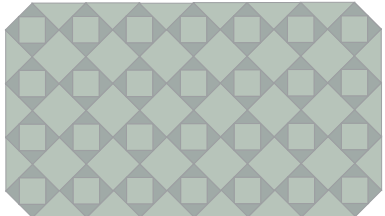
Rutland (B)

- 100mm Dark Blue Squares = 50 
- 70mm Pale Blue Squares = 50 
- 50/50/70mm Pearl Grey Triangles = 200 



Rutland (D)

- 100mm Pistachio Squares = 50 
- 70mm Pistachio Squares = 50 
- 50/50/70mm Pale Green Triangles = 200 




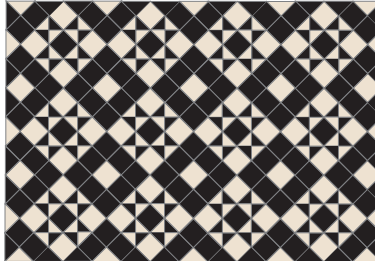



Monteith 70

The shapes in this design are available in all 25 colours. These are just a few examples of the colour combinations you can choose from.

Monteith can also be made up using 50mm squares and 35/35/50mm triangles

Tiles required per square metre

Monteith 70 (A)

70mm Black Squares = 95		
70mm White Squares = 58		
50/50/70mm Black Triangles = 98		
50/50/70mm White Triangles = 98		




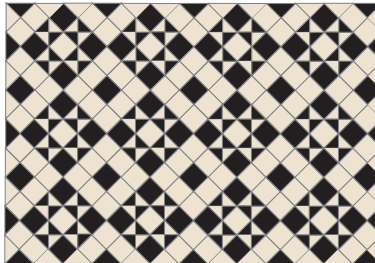



Monteith 70 (A) Reversed with a Classic border



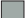
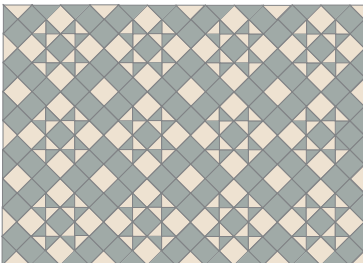



Monteith 70 (A) with a Classic border

Photograph courtesy of Tiled Perfection


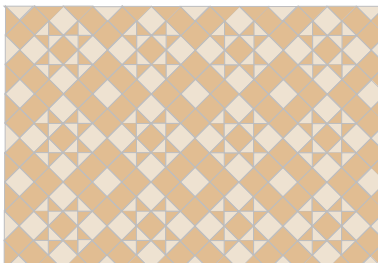



Monteith 70 (A) Reversed

70mm Black Squares = 58		
70mm White Squares = 95		
50/50/70mm Black Triangles = 98		
50/50/70mm White Triangles = 98		


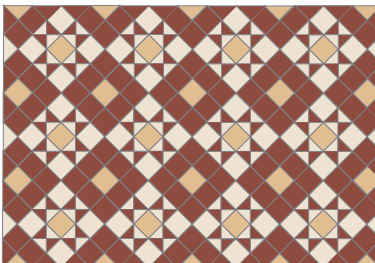




Monteith 70 (B)

70mm Pale Green Squares = 95		
70mm White Squares = 58		
50/50/70mm Pale Green Triangles = 98		
50/50/70mm White Triangles = 98		


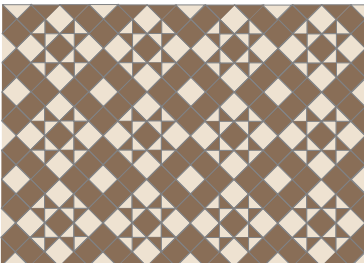



Monteith 70 (C)

70mm Cognac Squares = 95		
70mm White Squares = 58		
50/50/70mm Cognac Triangles = 98		
50/50/70mm White Triangles = 98		


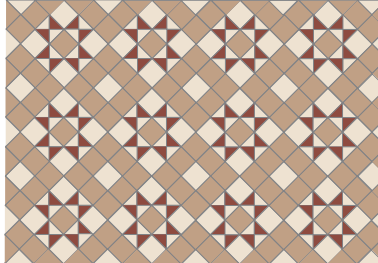



Monteith 70 (D)

70mm Red Squares = 78		
70mm White Squares = 49		
70mm Cognac Squares = 25		
50/50/70mm Red Triangles = 98		
50/50/70mm White Triangles = 98		

Monteith 70 (E)

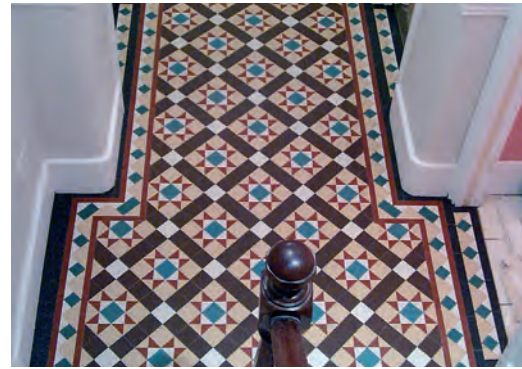
70mm Coffee Squares = 95		
70mm White Squares = 58		
50/50/70mm Coffee Triangles = 98		
50/50/70mm White Triangles = 98		

Monteith 70 (F)

70mm Linen Squares = 95		
70mm White Squares = 58		
50/50/70mm Red Triangles = 98		
50/50/70mm White Triangles = 98		

Carron

The shapes in this design are available in all 25 colours. These are just a few examples of the colour combinations you can choose from.



Carron custom design with Paladin border

Photograph courtesy of Tiled Perfection

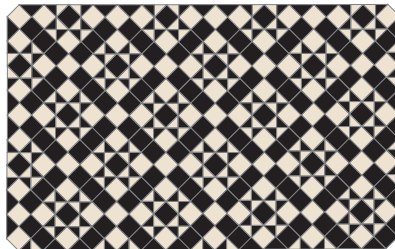


Carron (A) with a Classic border





Tiles required per square metre

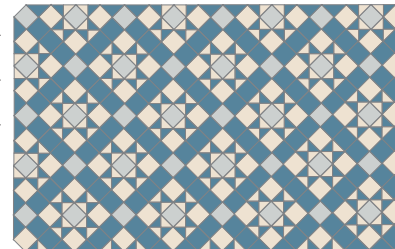
Carron (A)

- 50mm White Squares = 122 
- 50mm Black Squares = 172 
- 35/35/50mm White Triangles = 200 
- 35/35/50mm Black Triangles = 200 



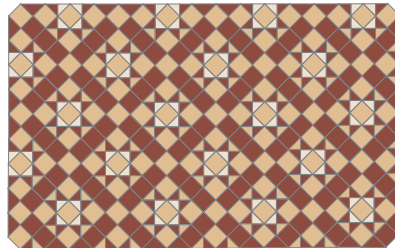
Carron (B)

- 50mm Pearl Grey Squares = 49 
- 50mm Dark Blue Squares = 147 
- 50mm White Squares = 98 
- 35/35/50mm Dark Blue Triangles = 200 
- 35/35/50mm White Triangles = 200 








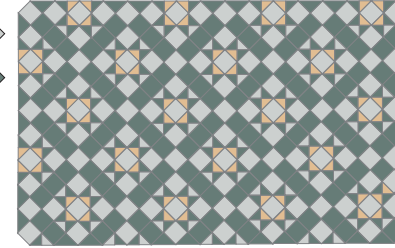
Carron (C)

- 50mm Cognac Squares = 147 
- 50mm Red Squares = 147 
- 35/35/50mm Red Triangles = 200 
- 35/35/50mm Cognac Triangles = 100 
- 35/35/50mm White Triangles = 100 



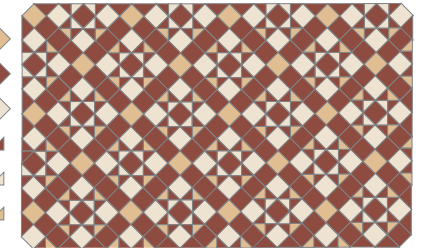
Carron (D)

- 50mm Pearl Grey Squares = 147 
- 50mm Dark Green Squares = 147 
- 35/35/50mm Cognac Triangles = 100 
- 35/35/50mm Dark Green Triangles = 200 
- 35/35/50mm Pearl Grey Triangles = 100 



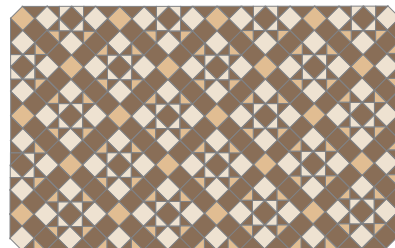
Carron (E)

- 50mm Cognac Squares = 24 
- 50mm Red Squares = 170 
- 50mm White Squares = 100 
- 35/35/50mm Red Triangles = 200 
- 35/35/50mm White Triangles = 100 
- 35/35/50mm Cognac Triangles = 100 



Carron (F)

- 50mm Cognac Squares = 24 
- 50mm White Squares = 98 
- 50mm Coffee Squares = 172 
- 35/35/50mm Coffee Triangles = 200 
- 35/35/50mm Cognac Triangles = 100 
- 35/35/50mm White Triangles = 100 



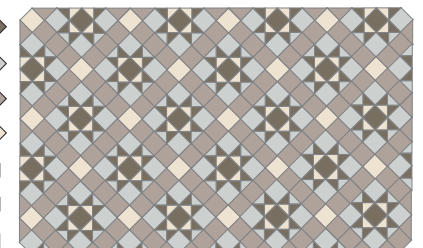
Carron (G)

- 50mm Brown Squares = 147 
- 50mm Pearl Grey Squares = 98 
- 50mm Dark Green Squares = 25 
- 50mm White Squares = 24 
- 35/35/50mm Cognac Triangles = 100 
- 35/35/50mm White Triangles = 100 
- 35/35/50mm Dark Green Triangles = 200 



Carron (H)

- 50mm Anthracite Squares = 25 
- 50mm Pearl Grey Squares = 98 
- 50mm Pale Grey Squares = 147 
- 50mm White Squares = 24 
- 35/35/50mm Anthracite Triangles = 200 
- 35/35/50mm Pearl Grey Triangles = 100 
- 35/35/50mm White Triangles = 100 



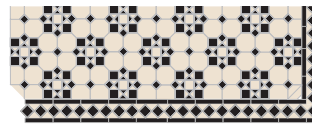
Katrine

Octagons are available in 11 colours, squares and triangles in all 25. See back page for details. These are just a few examples of the colour combinations you can choose from.

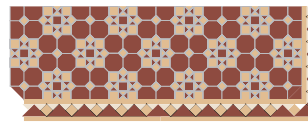


Photograph courtesy of Tiled Perfection

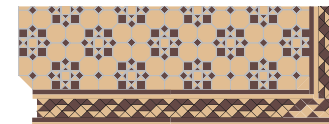
Katrine (A) with a Classic border



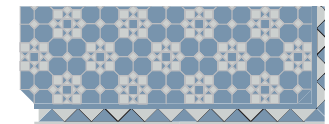
Katrine (A) with a Classic border



Katrine (B) with a Paladin border



Katrine (C) with a Twist border

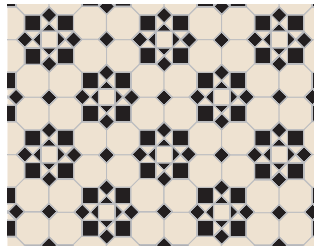


Katrine (F) with a Large Dootooth border

Tiles required per square metre

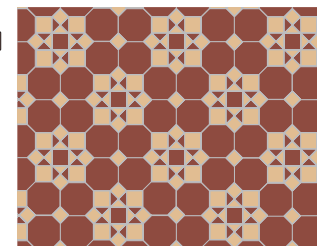
Katrine (A)

- 100mm White Octagons = 66
- 50mm Black Squares = 72
- 50mm White Squares = 13
- 35mm Black Squares = 72
- 35/35/50mm White Triangles = 120
- 35/35/50mm Black Triangles = 60



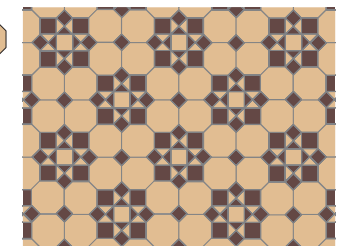
Katrine (B)

- 100mm Red Octagons = 66
- 50mm Cognac Squares = 72
- 50mm Red Squares = 13
- 35mm Cognac Squares = 72
- 35/35/50mm Red Triangles = 120
- 35/35/50mm Cognac Triangles = 60



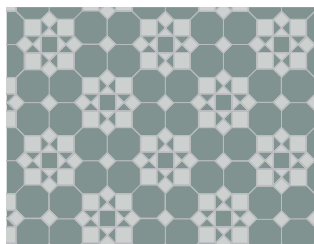
Katrine (C)

- 100mm Cognac Octagons = 66
- 50mm Brown Squares = 72
- 50mm Cognac Squares = 13
- 35mm Brown Squares = 72
- 35/35/50mm Cognac Triangles = 120
- 35/35/50mm Brown Triangles = 60



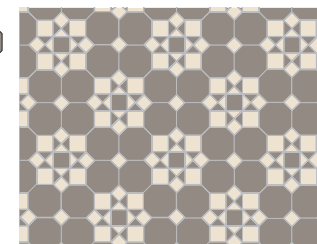
Katrine (D)

- 100mm Green Octagons = 66
- 50mm Pearl Grey Squares = 72
- 50mm Green Squares = 13
- 35mm Pearl Grey Squares = 72
- 35/35/50mm Green Triangles = 120
- 35/35/50mm Pearl Grey Triangles = 60



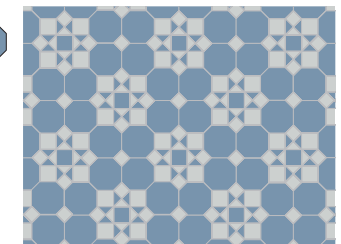
Katrine (E)

- 100mm Grey Octagons = 66
- 50mm White Squares = 72
- 50mm Grey Squares = 13
- 35mm White Squares = 72
- 35/35/50mm Grey Triangles = 120
- 35/35/50mm White Triangles = 60



Katrine (F)

- 100mm Blue Octagons = 66
- 50mm Pearl Grey Squares = 72
- 50mm Blue Squares = 13
- 35mm Pearl Grey Squares = 72
- 35/35/50mm Blue Triangles = 120
- 35/35/50mm Pearl Grey Triangles = 60



Lockwood

Tile shapes are available in all 25 colours so you can choose any combination of colours.



Photograph courtesy of Tiled Perfection

Tiles required per square metre

Lockwood (A)

- 100mm Brown Squares = 16
- 100/100/140mm Red Triangles = 64
- 70/70/100mm Cognac Triangles = 64
- 50mm Brown Squares = 128
- 50mm Cognac Squares = 16

Lockwood (C)

- 100mm White Squares = 16
- 100/100/140mm White Triangles = 64
- 70/70/100mm Black Triangles = 64
- 50mm Black Squares = 128
- 50mm White Squares = 16

Lockwood (B)

- 100mm Cognac Squares = 16
- 100/100/140mm Cognac Triangles = 64
- 70/70/100mm Super White Triangles = 64
- 50mm Brown Squares = 128
- 50mm Super White Squares = 16

Lockwood (D)

- 100mm Dark Green Squares = 16
- 100/100/140mm Green Triangles = 64
- 70/70/100mm Super White Triangles = 64
- 50mm Green Squares = 128
- 50mm Super White Squares = 16

Grafham

Tile shapes are available in all 25 colours so you can choose any combination of colours.



Photograph courtesy of Tiled Perfection

Tiles required per square metre

Grafham (A)

- 70mm Pistachio Squares = 100
- 50/50/70mm Pale Green Triangles = 200
- 50/50/70mm Dark Green Triangles = 200

Grafham (C)

- 70mm Pale Blue Squares = 100
- 50/50/70mm Blue Triangles = 200
- 50/50/70mm Dark Blue Triangles = 200

Grafham (B)

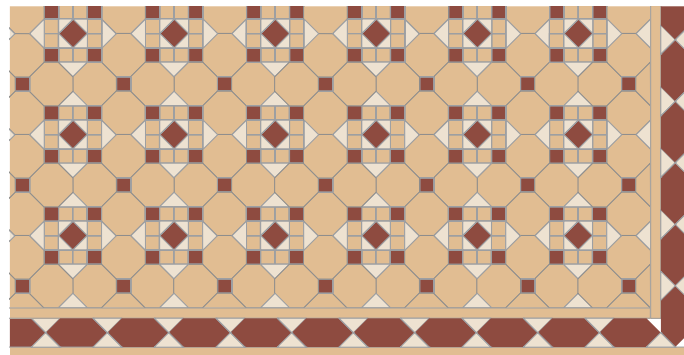
- 70mm Super White Squares = 100
- 50/50/70mm Pearl Grey Triangles = 200
- 50/50/70mm Anthracite Triangles = 200

Grafham (D)

- 70mm Pearl Grey Squares = 100
- 50/50/70mm Pale Grey Triangles = 200
- 50/50/70mm Anthracite Triangles = 200

Hallington

Octagons are available in 11 colours, squares and triangles in all 25, see back page for details. These are just a few examples of the colour combinations you can choose from.



Hallington (A) design with a Chain border



Hallington custom design with a Classic border featuring encaustic tiles in the pattern and the border.

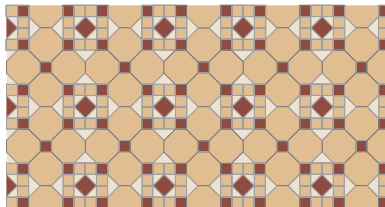


ENC 6A

Tiles required per square metre

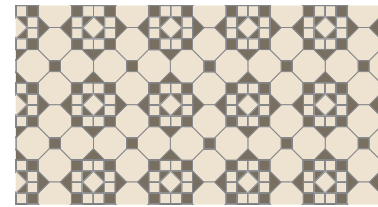
Hallington (A)

- 100mm Cognac Octagons = 64
- 35mm Cognac Squares = 132
- 35mm Red Squares = 84
- 50mm Red Squares = 16
- 50/50/70mm White Triangles = 68
- 35/35/50mm White Triangles = 68



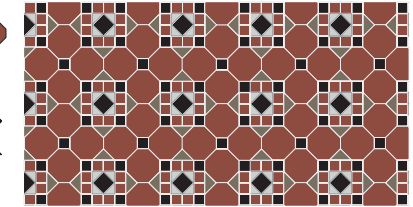
Hallington (B)

- 100mm White Octagons = 64
- 35mm White Squares = 132
- 35mm Anthracite Squares = 84
- 50mm White Squares = 16
- 50/50/70mm Anthracite Triangles = 68
- 35/35/50mm Anthracite Triangles = 68



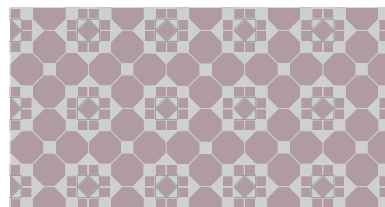
Hallington (C)

- 100mm Red Octagons = 64
- 35mm Red Squares = 132
- 35mm Black Squares = 84
- 50mm Black Squares = 16
- 50/50/70mm Anthracite Triangles = 68
- 35/35/50mm Pearl Grey Triangles = 68



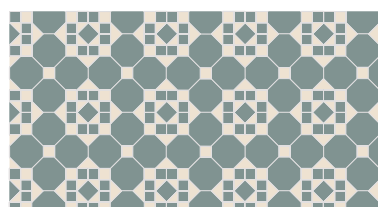
Hallington (D)

- 100mm Parme Octagons = 64
- 35mm Parme Squares = 132
- 35mm Pearl Grey Squares = 84
- 50mm Parme Squares = 16
- 50/50/70mm Pearl Grey Triangles = 68
- 35/35/50mm Pearl Grey Triangles = 68



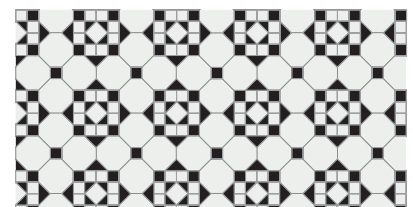
Hallington (E)

- 100mm Green Octagons = 64
- 35mm Green Squares = 132
- 35mm White Squares = 84
- 50mm Green Squares = 16
- 50/50/70mm White Triangles = 68
- 35/35/50mm White Triangles = 68



Hallington (F)

- 100mm Super White Octagons = 64
- 35mm Super White Squares = 132
- 35mm Black Squares = 84
- 50mm Super White Squares = 16
- 50/50/70mm Black Triangles = 68
- 35/35/50mm Black Triangles = 68



Barton 150

Ivory and Pale Blue tiles

Barton 150

Tiles required per square metre

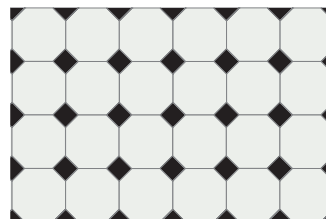
150mm Octagons = 44



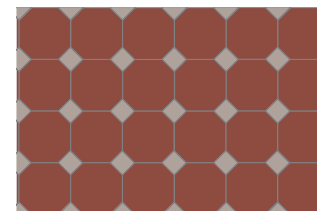
50mm Squares = 44



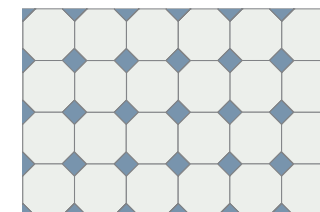
Super White and Black



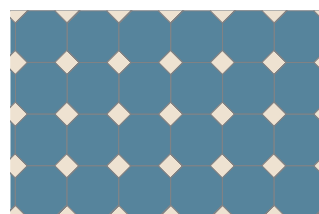
Red and Grey



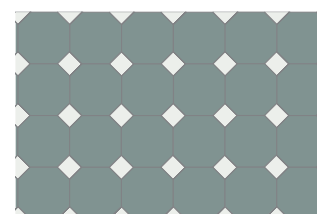
Super White and Blue



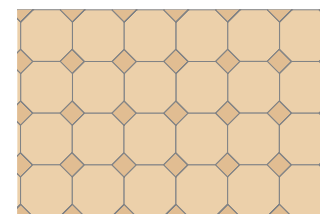
Blue and Super White



Green and Super White



Ivory and Cognac



Barton 100

Tiles required per square metre

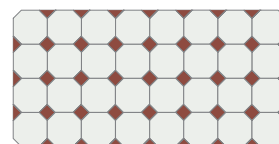
100mm Octagons = 100



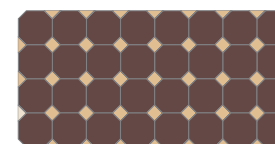
35mm Squares = 100



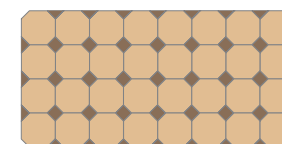
Super White and Red



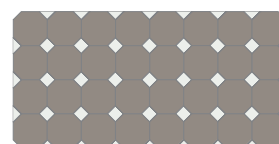
Brown and Cognac



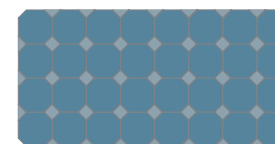
Cognac and Coffee



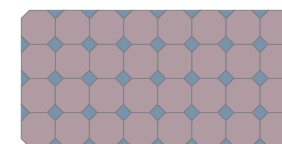
Grey and Super White



Blue and Pale Blue



Parme and Blue





Octagons are available in 11 colours, squares in all 25. Here are just a few examples of the colour combinations you can choose from.

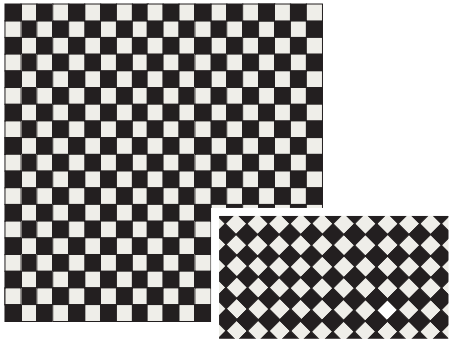
Ennerdale

Ennerdale 50

Tiles required per square metre


1st Colour = 200 


2nd Colour = 200 

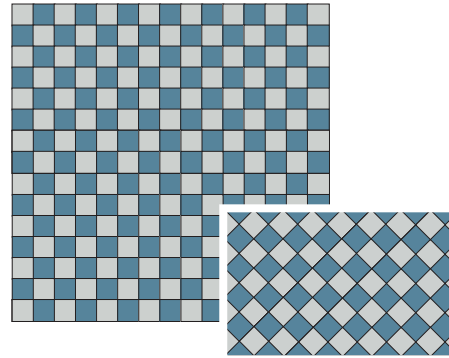


Ennerdale 70

Tiles required per square metre


1st Colour = 102 


2nd Colour = 102 

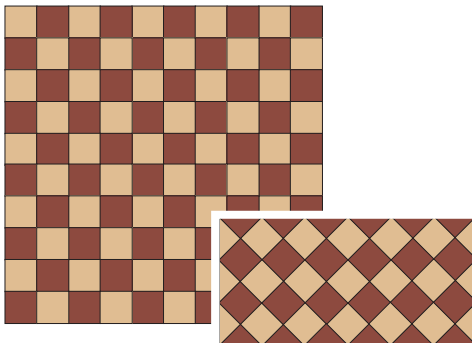


Ennerdale 100

Tiles required per square metre


1st Colour = 50 


2nd Colour = 50 

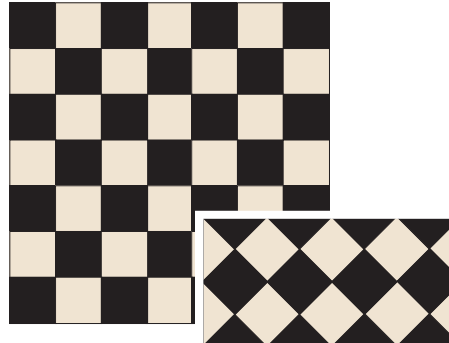


Ennerdale 150

Tiles required per square metre

1st Colour = 22 

2nd Colour = 22 



Tile shapes are available in all 25 colours so you can choose any combination of colours

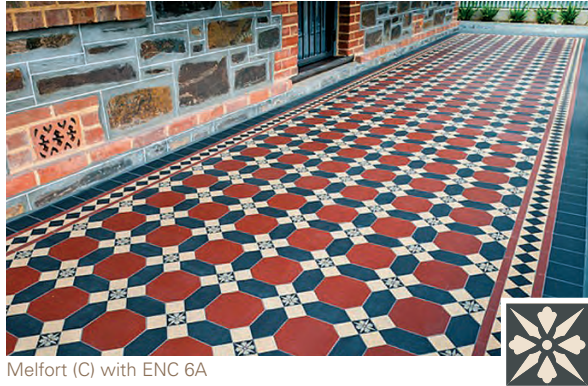
Ennerdale 50
Dark Green and White tiles



Photograph courtesy of Tiled Perfection

Melfort

Octagons and hexagons are available in 11 colours and squares in all 25. Here are just a few of the colour combinations on offer.



Melfort (C) with ENC 6A

Tiles required per square metre

		Melfort (A)			Melfort (B)
150mm Cognac Octagons = 20			150mm Super White Octagons = 20		
150mm Red Hexagons = 40			150mm Grey Hexagons = 40		
50mm Red Squares = 20			50mm Blue Squares = 20		
50mm Cognac Squares = 80			50mm Super White Squares = 80		
		Melfort (C)			Melfort (D)
150mm Red Octagons = 20			150mm White Octagons = 20		
150mm Black Hexagons = 40			150mm Black Hexagons = 40		
50mm Black Squares = 20			50mm Black Squares = 20		
50mm White Squares = 80			50mm White Squares = 80		

Encaustic tiles

Encaustic tiles use thin layers of coloured clay to make up the design. All Olde English encaustic tiles are fully vitrified and so are very hard wearing, as well as being frost resistant.

Unlike printed tiles, encaustics have a very long life expectancy. Some external encaustic tiles at our factory are now over 100 years old and are still in fine condition.

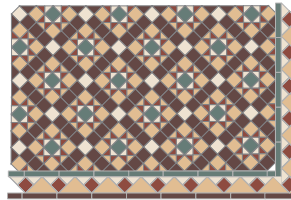
Encaustic tiles can be incorporated in most of the designs in this brochure, either as part of the pattern repeat or as central features or corners.

	ENC 6A	ENC 6B			
50mm squares					
	ENC 15	ENC 14A			
70mm squares					
	ENC 14B	ENC 3	ENC 5	ENC 10	ENC 11
100mm squares					

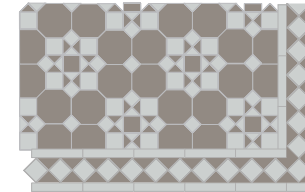
The encaustic tile manufacturing process uses thin layers of coloured clay. This can sometimes result in shade differences when compared to equivalent colours in the plain tile range.

Borders

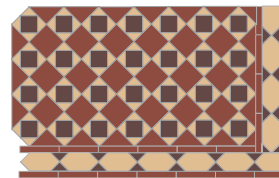
Border tiles are available in all 25 colours in most of the shapes*. These are just a few of the colour combinations we offer. Infill tiles should be purchased separately.



Carron design with a Paladin border



Katrine design with a Classic border



Rutland design with a Chain border



Colliford design with a Double Dogtooth border



Grasmere design with a Paladin border

Tiles required per linear metre

Large Dogtooth (width as shown 120mm)

150x25mm Red Strips = 7
100/100/140mm Cognac Triangles = 8
100/100/140mm Red Triangles = 8
150x25mm Cognac Strips = 7



150x25mm Brown Strips = 7
100/100/140mm Cognac Triangles = 8
100/100/140mm Brown Triangles = 8
150x25mm Cognac Strips = 7



150x25mm Black Strips = 7
100/100/140mm White Triangles = 8
100/100/140mm Black Triangles = 8
150x25mm White Strips = 7



Classic (width as shown 120mm)

150x25mm Cognac Strips = 14
50mm Cognac Squares = 15
50/50/70mm Red Triangles = 30



150x25mm Black Strips = 14
50mm Black Squares = 15
50/50/70mm White Triangles = 30

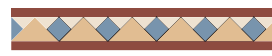


150x25mm Brown Strips = 14
50mm Red Squares = 15
50/50/70mm White Triangles = 30



Paladin (width as shown 120mm)

150x25mm Red Strips = 14
100/100/140mm Cognac Triangles = 7
50mm Blue Squares = 7
50/50/70mm White Triangles = 14



150x25mm Cognac Strips = 14
100/100/140mm White Triangles = 7
50mm Black Squares = 7
50/50/70mm Red Triangles = 14



150x25mm Black Strips = 14
100/100/140mm Cognac Triangles = 7
50mm Black Squares = 7
50/50/70mm White Triangles = 14



Chain (width as shown 120mm)

150x25mm Brown Strips = 14
150mm Cognac Hexagons = 7
50/50/70mm Red Triangles = 14



150x25mm Cognac Strips = 14
150mm Red Hexagons = 7
50/50/70mm White Triangles = 14



150x25mm Black Strips = 14
150mm White Hexagons = 7
50/50/70mm Red Triangles = 14



Double Dogtooth (width as shown 150mm)

150x25mm Brown Strips = 14
70/70/100mm Cognac Triangles = 20
70/70/100mm Red Triangles = 20



150x25mm Cognac Strips = 14
70/70/100mm Cognac Triangles = 20
70/70/100mm Red Triangles = 20

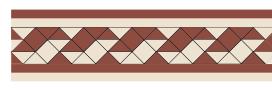


150x25mm Black Strips = 14
70/70/100mm White Triangles = 20
70/70/100mm Black Triangles = 20



Twist (width as shown 205mm)

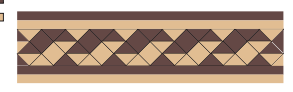
150x25mm Red Strips = 14
150x25mm White Strips = 14
50mm Red Squares = 7
50mm White Squares = 7
50/50/70mm Red Triangles = 30
50/50/70mm White Triangles = 30



150x25mm Black Strips = 14
150x25mm White Strips = 14
50mm Black Squares = 7
50mm White Squares = 7
50/50/70mm Black Triangles = 30
50/50/70mm White Triangles = 30



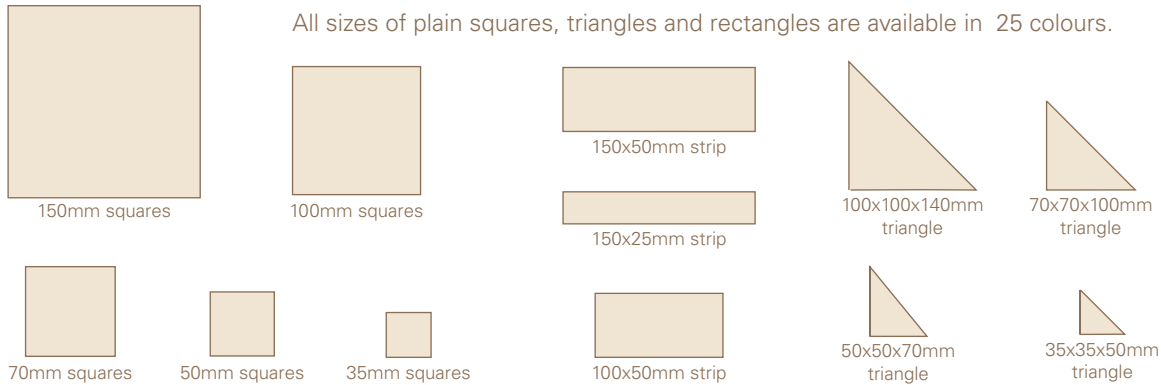
150x25mm Brown Strips = 14
150x25mm Cognac Strips = 14
50mm Brown Squares = 7
50mm Cognac Squares = 7
50/50/70mm Brown Triangles = 30
50/50/70mm Cognac Triangles = 30



*Hexagons are only available in 11 colours. See colour chart on back page.

Shapes and sizes

Plain squares, rectangles & triangles

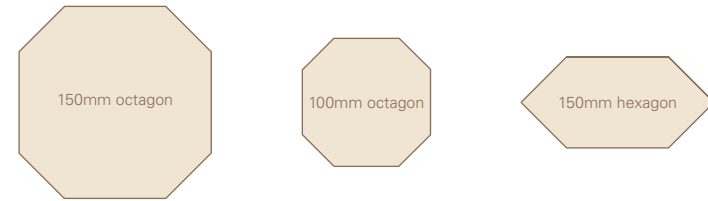


Colour chart



The colours shown are as accurate as the printing process allows. We suggest you view tile samples at your local Olde English dealer.

Octagons & hexagons



Octagons and hexagons are available in 11 colours
(See colour chart below)

Step treads, RE and REX



Step treads, RE *and REX** are available in 6 colours
(See colour chart left)

*RE has one rounded edge **REX has two rounded edges

